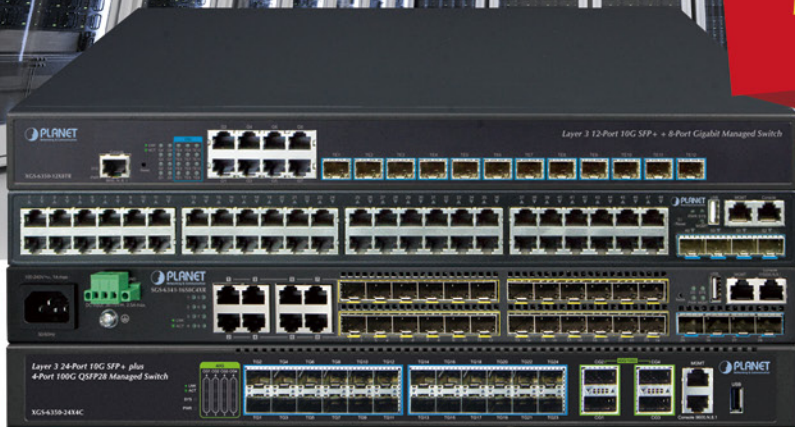


IP Stacking
Up to 24 Units



Layer 3 Enterprise Stackable Switches

» XGS-6350 / SGS-6341 / SGS-6310 Series



Layer 3 24-Port 10G SFP+
+ 4-Port 100G QSFP28
Managed Switch
XGS-6350-24X4C



Layer 3 48-Port 10/100/1000T
802.3at PoE + 6-Port 10G SFP+
Stackable Managed Switch
SGS-6310-48P6XR



Layer 3 48-Port 10/100/1000T +
4-Port 10G SFP+ Stackable
Managed Switch
SGS-6341-48T4X



Layer 3 48-Port 10G SFP+ +
2-Port 40G QSFP+ + 4-Port
100G QSFP28 Managed Switch
XGS-6350-48X2Q4C



Layer 3 16-Port 100/1000X SFP +
8-Port Gigabit TP/SFP + 4-Port 10G
SFP+ Stackable Managed Switch
SGS-6310-16S8C4XR

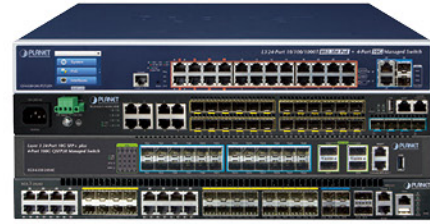


Layer 3 24-Port 10/100/1000T
802.3at PoE + 4-Port 10G SFP+
Stackable Managed Switch
SGS-6341-24P4X

LAN Switches

IPv4 and IPv6 Hardware Layer 3 Routing

Designed for system integrators and SMEs, the Layer 3 series provides not only ultra high transmission performance and excellent Layer 3 technologies, but also IPv4 and IPv6 VLAN routing feature, which allows to get across different VLANs and different IP addresses for the purpose of having a highly-secure, flexible management and simpler networking application.



Powerful 10Gbps~100Gbps Ultra-high-bandwidth Solution for Big Data System

PLANET's 10Gbps~100Gbps managed switches boast a high-performance switch architecture that is capable of providing non-blocking switch capacity and wire-speed throughput as high as 128Gbps~1.28Tbps. They can handle extremely large amounts of data in a secure topology linking to backbone or high capacity servers where audio, video streaming and multicast applications are utilized, perfectly suitable for data centers, service providers and telecoms to establish high bandwidth for Big Data server farm.

User-friendly Management with Unique LCD Touch Screen

Aiming to promote the management efficiency in large-scale networks, PLANET provides world's first Color Touch LCD Ethernet Switch that offers quick installation, real-time monitoring of data transmission and PoE work status, and immediate troubleshooting through its unique LCD display found on the front panel. This cutting-edge Plug and Watch Ethernet solution makes the operation of the LCD Ethernet Switch simple for SMBs, enterprises, warehouses, factories, hotels, government buildings, and other public areas to manage their networks.



Efficient Single IP Management

PLANET stackable switch series applies the advantage of the stacking technology to managing the stack group with one single IP address, which helps network managers to easily manage a stack of switches instead of connecting and setting each unit one by one. It provides IP Stacking function to configure up to a total of 24 switches with up to 16 switches stacked up.

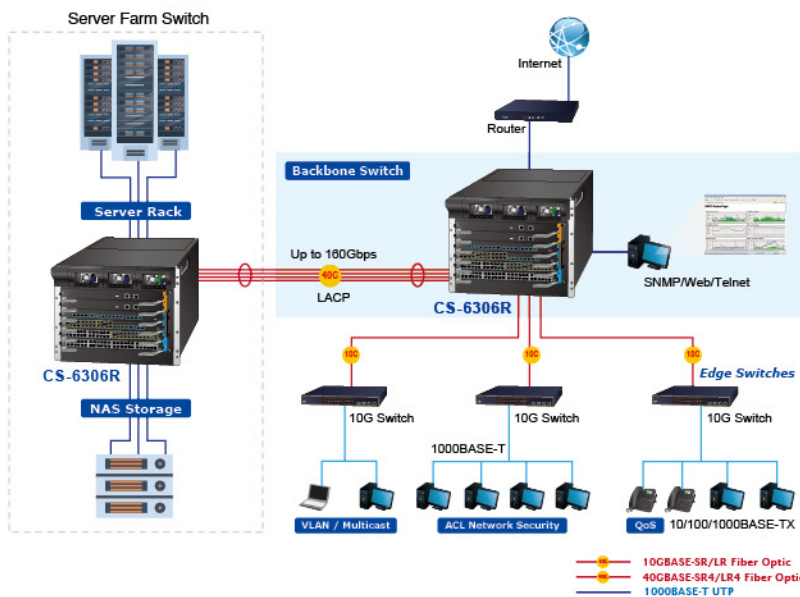
Layer 3 Managed Chassis Switches

CS-6306R



PLANET CS-6306R Core-Layer Routing Switch is specially designed for large network applications such as enterprises, campuses, communities, ISPs and data center networks where flexible configuration, large capacity, high density, high reliability and advanced traffic management are required.

The CS-6306R is a high-density chassis-based routing switch built with 6 module slots and redundant power supply. It provides great porting flexibility for network deployment by offering various and combinable management modules and standard interfaces. With 10-Gigabit and 40-Gigabit Ethernet technology applied, the CS-6306R provides broad bandwidth and powerful processing capacity. The Chassis Switch supports wire-speed L2/L3 forwarding and high routing performance for IPv4 and IPv6 protocols.



CS-6306R

- 192-port 10/100/1000BASE-T copper
 - 192 1000BASE-SX/LX SFP fiber slots
 - 64 10G XFP fiber slots
 - 16 40G QSFP+ fiber slots
 - 19-inch, 9U rack-mount
-
- Gigabit wire-speed Layer 3 IPv4 and IPv6 routing
 - Four slots for optional Gigabit/10 Gigabit modules
 - IP routing protocols: static routing, RIPv1/v2, OSPFv2, BGP4 & VRRP
 - IP multicast routing: IGMP, PIM-DM/SM
 - IEEE 802.1Q, Private VLAN and GVRP for VLAN management
 - IEEE 802.1D/1w/1s Spanning Tree Protocol
 - IEEE 802.1x, RADIUS, TACACS+, SSH and SSL
 - L2, L3 and L4 Access Control List and QoS
 - 100~240V AC redundant power system

Module	CS6-S48T	CS6-S48S	CS6-S24S8X	CS6-S24T8X	CS6-S24T24S	CS6-S16X	CS6-S4Q
Product							
10/100/1000T	48	-	-	24	24	-	-
1000X SFP	-	48	24	-	24	-	-
10G SFP+	-	-	8	8	-	16	-
40G QSFP+	-	-	-	-	-	-	4

10G Full Layer 3 Managed Switches

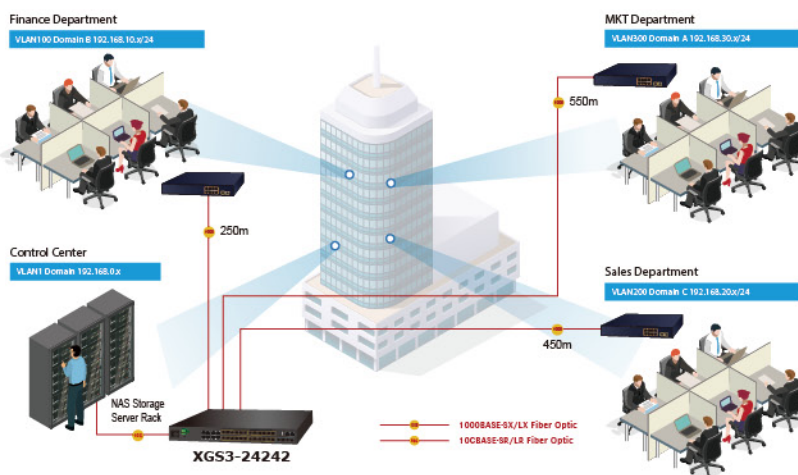
XGS3 Series



Positioned as the distribution and aggregation layer switch for large networks, PLANET XGS3 Series, a multi-layer IPv6/IPv4 10Gbps Ethernet Routing Switch, supports IP stacking technology to manage and configure up to 24 units via one single IP address efficiently. It serves campus and IP metropolitan networks by offering advanced intelligent and secure features as well as high performance and flexibility. The XGS3-24242 can also be an excellent choice as a core layer switch for enterprises, data centers and small- and medium-sized networks. With excellent hardware design and software features in a compact 1U height format, PLANET XGS3 Series comes with the following advanced technologies:

- Hardware-based IPv6/IPv4 high routing performance
- IPv6/IPv4 dual stack management
- 10G Ethernet switching
- Single IP address management
- Redundant power system

VLAN Routing + 10G Uplink Applications



XGS3-24042

- 10/100/1000BASE-T port x 24
- 100/1000BASE-X SFP port x 4 shared with Port-21 to Port-24
- 10GBASE-X SFP+ port x 4
- Dual 100~240V AC redundant power

XGS3-24242

- 100/1000BASE-X SFP port x 24
- 10/100/1000BASE-T port x 8 shared with Port-1 to Port-8
- 10GBASE-X SFP+ port x 4
- 100~240V AC and 36~75V DC redundant power

- Gigabit wire-speed Layer 3 IPv4 and IPv6 routing
- IP routing protocols: static routing, RIPV1/v2, OSPFv2, BGP4 & VRRP
- IP multicast routing: IGMP, PIM-DM/SM, DVMRP
- IEEE 802.1Q, Private VLAN and GVRP for VLAN management
- L2, L3 and L4 Access Control List and IEEE 802.1x support
- SNMP v1/v2c/v3 and RMON Group 1, 2, 3, 9
- IP stacking management, up to 24 units
- 19-inch, 1U rack-mount

Layer 3 Enterprise Stackable Managed Switches

SGS-6341 Series/SGS-6310 Series



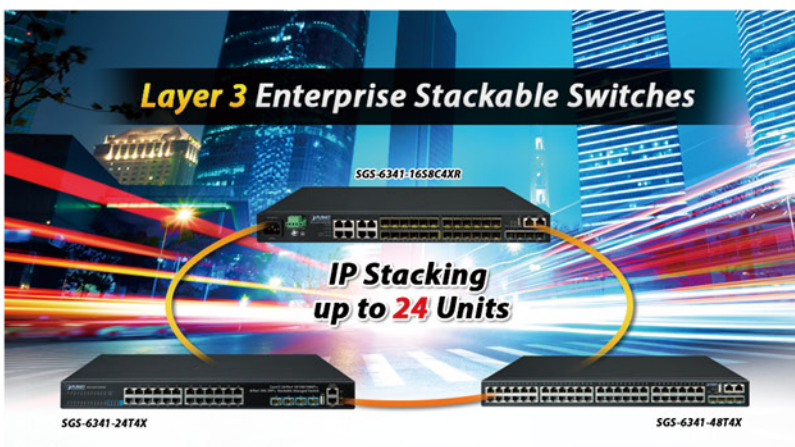
Cost-effective Layer 3 Routing Solution for Enterprise Intranet Networking

Designed for enterprises and small- and medium-sized businesses where an intranet routing network is built, PLANET SGS-6341/SGS-6310 series, a Layer 3 Stackable Gigabit Managed Switch, provides hardware-based Layer 3 routing capability with IPv4 and IPv6 static routing, RIP (Routing Information Protocol) and OSPF (Open Shortest Path First) routing features which allow to cross over different VLANs and different IP addresses, and performs effective data traffic control for security, VoIP and video streaming applications.

Efficient IP Stacking Management

The SGS-6341 series supports IP stacking function that helps network managers to easily configure up to 24 switches in the same series via one single IP address instead of connecting and setting each unit one by one. It enables centralized management regardless of the series of switches being distributed in various locations. New switches can be flexibly added to the IP stacking group when network expands.

- IP Routing protocols: Static Routing, RIPv1/v2 and OSPFv2
- IPv4 and IPv6 Web Interface; SNMP v1, v2c and v3; SSH and SSL management
- IEEE 802.1Q VLAN, Private VLAN and GVRP
- IEEE 802.1w/1s/1D Spanning Tree Protocol
- Layer 2,3 and 4 Access Control List and QoS
- IGMP Snooping v1, v2 and v3; and MLD Snooping v1 and v2
- IP stack: up to 24 units and single IP address stack management



SGS-6341-48T4X

- 10/100/1000BASE-T port x 48
- 10GBASE-X SFP+ port x 4
- USB interface for configuration file backup or upload

SGS-6341-16S8C4XR

- 100/1000BASE-X SFP port x 24
- 10/100/1000BASE-T port x 8 shared with Port-1 to Port-8
- 10GBASE-X SFP+ port x 4
- 100~240V AC and 36~75V DC redundant power system
- Smart fan design for silent operation

SGS-6341-24T4X

- 10/100/1000BASE-T port x 24
- 10GBASE-X SFP+ port x 4
- USB interface for configuration file backup or upload

SGS-6341-24P4X

- 10/100/1000BASE-T with 802.3at PoE+ port x 24
- 10GBASE-X SFP+ port x 4
- 370-watt PoE budget

SGS-6310-48T6X

- 10/100/1000BASE-T port x 48
- 10GBASE-X SFP+ port x 6
- Hardware stacking up to 8 units

SGS-6310-24T4X

- 10/100/1000BASE-T port x 24
- 10GBASE-X SFP+ port x 4
- Hardware stacking up to 8 units

SGS-6310-16S8C4XR

- 100/1000BASE-X SFP port x 24
- 10/100/1000BASE-T port x 8, shared with Port-1 to Port-8
- Dual 100~240V AC redundant power system
- Hardware stacking up to 8 units

SGS-6310-48P6XR

- 10/100/1000BASE-T with 802.3at PoE+ port x 48
- 10GBASE-X SFP+ port x 6
- 370-/740-watt PoE budget
- 100~240V AC and 55V DC dual power Input for maximum PoE budget
- Hardware stacking up to 8 units

SGS-6310-24P4X

- 10/100/1000BASE-T with 802.3at PoE+ port x 24
- 10GBASE-X SFP+ port x 4
- 370-watt PoE budget
- Hardware stacking up to 8 units

10G/40G/100G Fiber Managed Switches

XGS-6350 Series/XGS-5240-24X2QR



Powerful Layer 3 Routing with Multiple 10Gbps~100Gbps Fiber Solution

PLANET XGS-6350 series, consisting of Layer 3 10Gbps~100Gbps Managed Switches, provides hardware-based Layer 3 routing capability with IPv4/IPv6 static routing, RIP (Routing Information Protocol) and OSPF (Open Shortest Path First) routing features. With ultra-high switching fabric, the XGS-6350 series can handle extremely large amounts of data in a secure topology linking to backbone or high capacity servers for enterprises, data centers, campuses and so on where VoIP, video streaming, and multicast applications are utilized.



XGS-6320 Series



10GBASE-T and 10GBASE-X SFP Dual Media Interfaces for Diversified Bandwidth Applications

PLANET XGS-6320 series is a fully-managed all-port 10Gbps Ethernet switch designed for the demand of high-bandwidth required network equipment, such as Wi-Fi 6/6E wireless AP, NAS, workstation and those with 10Gbps fiber or copper interfaces. It has the capability to reach a high speed of 10Gbps over copper or fiber-optic cabling which helps to accelerate the performance of large data transmission. The built-in 10GBASE-T copper interfaces support 5-speed (10G/5G/2.5G/1G/100) auto-negotiation, and 10Gbps data transmission with the existing Cat6A/Cat7 UTP cabling.

XGS-6350-48X2Q4C

- 10G/1G SFP+ ports x 48
- 40G QSFP+ ports x 2
- 100G QSFP28 ports x 4
- Optional Hot-swappable 100~240V AC/36~72V DC redundant power
- Detachable fan modules

XGS-6350-24X4C

- 40G/100GbE QSFP28 port x 4
- 1G/10G SFP+ port x 24

XGS-6350-12X8TR

- 1G/10G SFP+ port x 12
- 10/100/1000BASE-T port x 8
- Dual 100~240V AC redundant power

XGS-5240-24X2QR

- 1G/10G SFP+ port x 24
- 40G QSFP+ port x 2
- 100~240V AC and 36~72V DC redundant power system

XGS-6320-8X8TR

- 10G/2.5G/1G SFP+ port x 8
- 10G/5G/2.5G/1G/100BASE-T RJ45 port x 8
- 100~240V AC/36~60V DC redundant power
- ITU G.8032 ERPS Ring

XGS-6320-12X4TR

- 10G/2.5G/1G SFP+ port x 12
- 10G/5G/2.5G/1G/100BASE-T RJ45 port x 4
- 100~240V AC/36~60V DC redundant power
- ITU G.8032 ERPS Ring

Touch LCD 10G Layer 3 IPv6 Managed Gigabit Switches



Intuitive LCD for Efficient Management

PLANET **GS-5220/GS-6320 Smart LCD Switch** series provides an intuitive touch panel on their front panels that facilitate the Ethernet management and PoE PD management. They greatly promote management efficiency in large-scale network and feature the following special management and status functions:

- IP address, VLAN and QoS configuration
- PoE management and status
- Port management and status/SFP information
- Troubleshooting: cable diagnostic and remote IP ping
- Maintenance: reboot, factory default and save configuration

The GS-5220/GS-6320 LCD PoE switch models featuring PLANET intelligent PoE management to improve the availability of critical business applications have an awesome feature -- ONVIF Support -- which is specifically designed for co-operating with Video IP Surveillances. From the GUI, you just need one click to search and show all of the ONVIF devices via network application, thus enabling to pinpoint the location of the particular surveillance device for easier inspection and planning.



GS-5220-24T4XV(R)

- 10/100/1000BASE-T port x 24
- 1G/10G SFP+ port x 4
- R model supports 100~240V AC/48~60V DC redundant power

GS-5220-16T2XV(R)

- 10/100/1000BASE-T port x 16
- 1G/10G SFP+ port x 2
- R model supports 100~240V AC/48~60V DC redundant power

PoE Models

GS-6320-24UP2T2XVR

- 10/100/1000BASE-T with 802.3bt PoE port x 24
- 1G/10G SFP+ port x 2
- 10GBASE-T port x 2
- 600-watt PoE budget
- Up to 95 watts PoE output
- Supports 100~240V AC/48~60V DC redundant power

GS-5220-24UPL4XVR

- 10/100/1000BASE-T with 802.3bt PoE port x 24
- 1G/10G SFP+ port x 4
- 600-watt PoE budget
- Up to 95 watts PoE output
- R model supports 100~240V AC/48~60V DC redundant power

10G Layer 3 IPv6 Managed Gigabit Switches

GS-5220 Series/GS-6320 Series



PLANET GS-5220/GS-6320 10G series is the Layer 3 IPv6 and IPv4 Gigabit Ethernet switch with 10Gbps uplink to greatly support SMB and enterprise networks to achieve 10Gbps high performance in a cost-effective way. The GS-5220/GS-6320 Series can work with PLANET ENW-9800 series or the third-brand 10Gbps server adapter to help SMBs build 10Gbps Ethernet network providing 10Gbps NAS (Network Attached Storage) or heavy transmission of video streaming service at an affordable price.

- IP Routing Protocols: Static Routing and OSPFv2
- 4 SFP+ slots support dual-speed, 10GBASE-SR/LR & 1GBASE-SX/LX/BX
- IPv6 Web interface; SNMP v1, v2c and v3; SSH and SSL management
- IEEE 802.1Q VLAN, Private VLAN, Q-in-Q, Protocol-based VLAN and MAC-based VLAN
- IEEE 802.1D/1w/1s Spanning Tree Protocol for Ethernet redundancy
- Layer 2, 3 and 4 Access Control List
- IGMP Snooping v1, v2 and v3; and MLD Snooping v1 and v2
- 19-inch, 1U rack-mount



CRPS Power supplies
GS-6322-24P4X

Multigigabit L3 IPv6 Managed PoE Switches

MGS-5220-8P2X/MGS-6320 Series



Multigigabit
2.5G



The MGS-5220-8P2X series is PLANET's first Multigigabit Layer 3 Managed Switch designed in compact size. Offering 8-port PoE 2.5GBASE-T and 2-port dual speed 10G SFP+, it breaks the bandwidth limitation of connecting the wireless network with the wired network. Featuring Layer 3 routing and PLANET Intelligent PoE functions, it provides a highly-secure, environment-friendly network management and accelerates the deployment of wireless network infrastructure for smart cities.

- 8 100/1000/2.5GBASE-T ports, 2 dual speed SFP+ slots
- 8 ports with 30~36W PoE output
- Intelligent PoE functions including PD alive check, PoE schedule, scheduled power recycling and over-temperature protection
- 13-inch compact size

GS-5220-16T4S2X(R)

- 10/100/1000BASE-T port x 16
- 100/1000BASE-X SFP port x 4
- 1G/10G SFP+ port x 2
- R model supports 100~240V AC/48~60V DC redundant power

GS-6320-46S2C4XR

- 100/1000BASE-X SFP port x 48
- 10G SFP+ port x 4
- 10/100/1000BASE-T port x 2
- 1U height, 19-inch rack-mountable

PoE Models

GS-6322-24P4X

- 10/100/1000BASE-T with 802.3bt PoE port x 24
- 100/1G/2.5G/5G/10GBASE-T port x 2
- 1G/2.5G/10G SFP+ port x 2
- Up to 2280 watts PoE budget
- Up to 95 watts PoE output
- Supports dual 100~240V AC redundant power

GS-5220-24UPL4XR

- 10/100/1000BASE-T with 802.3bt PoE port x 24
- 100/1000BASE-X SFP port x 4
- 1G/10G SFP+ port x 4
- 600-watt PoE budget
- Up to 95 watts PoE output
- R model supports 100~240V AC/48~60V DC redundant power

GS-5220-48P(L)4X(R)

- 10/100/1000BASE-T with 802.3at PoE+ port x 48
- 1G/10G SFP+ port x 4
- R model supports 100~240V AC/48~60V DC redundant power
- 400-/600-watt PoE budget
- Up to 36 watts per PoE port

GS-5220-24PL4XR

- 10/100/1000BASE-T with 802.3at PoE+ port x 24
- 1G/10G SFP+ port x 4
- 600-watt PoE budget
- Up to 36 watts per PoE port
- R model supports 100~240V AC/48~60V DC redundant power

GS-5220-8UP2T2X

- 10/100/1000BASE-T with 802.3at/bt PoE+ port x 8
- 10/100/1000BASE-T port x 2
- 10G SFP+ port x 2
- 240-watt PoE budget
- Up to 95 watts per PoE port

GS-6320-8P2X

- 10/100/1000BASE-T with 802.3at PoE+ port x 8
- 1G/2.5G/10G SFP+ port x 2
- 120-watt PoE budget
- Up to 36 watts per PoE port

MGS-6320-8T2X/MGS-6320-8HP2X

- 2500/1000/1000BASE-T port x 4
- 10/100/1000BASE-T port x 4
- 1G/2.5G/10G SFP+ port x 2
- 802.3bt PoE++ port x 4, 802.3at PoE+ port x 4 (MGS-6320-8HP2X)
- 240-watt PoE budget (MGS-6320-8HP2X)
- Up to 95 watts per PoE++ port (MGS-6320-8HP2X)

MGS-5220-8P2X

- 2500/1000/100/10BASE-T with 802.3at PoE+ port x 8
- 1G/10G SFP+ port x 2
- 240-watt PoE budget
- Up to 36 watts per PoE port

10G Layer 2+ IPv6 Stackable Managed Gigabit Switches

SGS-5240 Series



The SGS-5240 series applies the advantage of the stacking technology to managing the stack group with one single IP address. Up to 6 units, 288 Gigabit Ethernet ports and 12 10Gbps SFP+ slots can be managed by a stacking group and you can add ports and functionality as needed.

- IPv4 and IPv6 Layer 3 static routing
- IEEE 802.1Q VLAN, Private VLAN and Q-in-Q
- IGMP Snooping v1, v2 and v3; and MLD Snooping v1 and v2
- IEEE 802.1s MSTP and loop protection
- IPv6 Web interface; SNMP v1, v2c and v3; and SSH and SSL management

IP Stacking

- Connects with stack member via Gigabit TP, SFP and 10G SFP+ interfaces
- Single IP address management, supporting up to 16 IP units stacked together

Hardware Stacking

- Virtualized multiple SGS-5240 switch series stacked into one logical device
- Connects with stack member via assigned 10G SFP+ interfaces
- Single IP address stack management, supporting up to 6 hardware units stacked together
- Stacking architecture supports redundant ring mode

Layer 3/2+ IPv6 Managed Metro Switches

MGSW Series



To fulfill the growing demand for IP network deployment from LAN to MAN (Metropolitan Area Network), PLANET MGSW Gigabit Metro Ethernet Switch Series is specially designed to deliver profitable wide-ranging Ethernet network based on the optical fiber technology. Furthermore, it adopts "Front Access" design for easy wiring and maintenance of the MGSW Series in the cabinet.

- Redundant power system: dual -36V~60V DC and 100V~240V AC
- -10 to 60 degrees C operating temperature
- IEEE 802.1Q VLAN, Protocol VLAN, GVRP and MVR
- IEEE 802.1D/1w/1s Spanning Tree Protocol for Ethernet redundancy
- Policy-based QoS, bandwidth control and storm control
- Layer 2, 3 and 4 Access Control List and port security
- Web; SNMP v1, v2c, v3; and Telnet remote IP management
- IPv6 and IPv4 dual stack management
- Digital input and digital output
- Front access design
- 19-inch, 1U rack-mountable installation

SGS-5240-24T4X

- 10/100/1000BASE-T port x 24
- 10GBASE-X SFP+ Slots x 4
- 100~240V AC, 50/60Hz power supply

SGS-5240-24P4X

- 10/100/1000BASE-T port x 24
- 10GBASE-X SFP+ Slots x 4
- 100~240V AC, 50/60Hz power supply
- 370-watt PoE budget

SGS-5240-20S4C4XR

- 10/100/1000BASE-T port x 4
- 100/1000BASE-X SFP Slots x24
- 10GBASE-X SFP+ Slots x 4
- 100~240V AC, 50/60Hz and 36~72V DC redundant power

SGS-5240-48T4X

- 10/100/1000BASE-T port x 48
- 10GBASE-X SFP+ Slots x 4
- 100~240V AC, 50/60Hz power supply

MGS-6320-2T6S2X

- 100/1000BASE-T port x 2
- 100/1000BASE-X SFP port x 2
- 100/1000/2500BASE-X SFP port x 4
- 1000/2500/10GBASE-X SFP+ port x 2
- Supports ITU-G.8032 ERPS Ring
- Layer 3 OSPFv2 dynamic routing

MGSD-10080F

- 100/1000BASE-X SFP port x 6
- 100/1000/2500BASE-X SFP port x 2
- 10/100/1000BASE-T port x 2
- Supports ITU-G.8032 ERPS Ring

MGSW-24160F

- 100/1000BASE-X SFP port x 16
- 10/100/1000BASE-T port x 8

MGSW-28240F

- 10/100/1000BASE-T ports x 4
- 100/1000BASE-X SFP port x 14
- 100/1000/2500BASE-X SFP port x 10
- 1000/2500/10GBASE-X SFP+ port x 4
- Supports ITU-G.8032 ERPS Ring
- Layer 3 OSPFv2 dynamic routing



Layer 2+ IPv6 Managed Gigabit Switches

WGSW Series/GS-5220 Series



PLANET WGSW and GS-5220 series support both IPv4 and IPv6 management functions, and IPv4 and IPv6 Layer 3 static routing. It offers IPv4 and IPv6 VLAN routing feature which allows to crossover different VLANs and different IP addresses for the purpose of having a highly-secure, flexible management and simpler networking applications.

The GS-5220 Fiber Switch series as the fiber backbone switch providing 24 100/1000BASE-X dual-speed SFP slots can flexibly work with suitable SFP transceivers to have a long connection of up to 120km via optic fiber cabling.

With easy and friendly management interfaces and plenty of management functions included, PLANET WGSW and GS-5220 series is the best choice for ISPs to build the IPv6 FTTx edge service and for SMBs to connect with IPv6 network.

- IPv4 and IPv6 Layer 3 static routing
- IPv6 Web interface; SNMP v1, v2c and v3; SSH and SSL management
- Static and IEEE 802.3ad Link Aggregation
- DHCP snooping/ARP Inspection and IP Source Guard
- IEEE 802.1Q VLAN, Private VLAN, Q-in-Q, Protocol-based VLAN and MAC-based VLAN
- IEEE 802.1D/1w/1s Spanning Tree Protocol
- QoS control list and bandwidth control
- 802.1X, RADIUS and TACACS+ authentication
- Layer 2, 3 and 4 Access Control List
- IGMP snooping v1, v2 and v3; and MLD snooping v1 and v2
- PoE models support PD alive check, PoE schedule, scheduled power recycling and over temperature protection

WGSW-24040/WGSW-24040R

- 10/100/1000BASE-T port x 24
- 100/1000BASE-X SFP port x 4
- 100~240V AC/-48V DC redundant power

GS-5220-16S8C/GS-5220-16S8CR

- 10/100/1000BASE-T port x 8
- 100/1000BASE-X SFP port x 24
- Each SFP slot supports DDM
- 100~240V AC/-48V DC redundant power

PoE Models

GS-5220-8P2T2S

- 10/100/1000BASE-T with 802.3at PoE+ port x 8
- 10/100/1000BASE-T port x 2
- 100/1000BASE-X SFP port x 2
- 240-watt PoE budget
- 13-inch desktop size, 1U rack-mountable
- Smart fan design for silent operation

WGSW-20160HP

- 10/100/1000BASE-T with 802.3at PoE+ port x 16
- 10/100/1000BASE-T port x 4
- 100/1000BASE-X SFP port x 4
- 220-watt PoE budget

WGSW-24040HP4

- 10/100/1000BASE-T with 802.3at PoE+ port x 24
- 100/1000BASE-X SFP port x 4
- 440-watt PoE budget

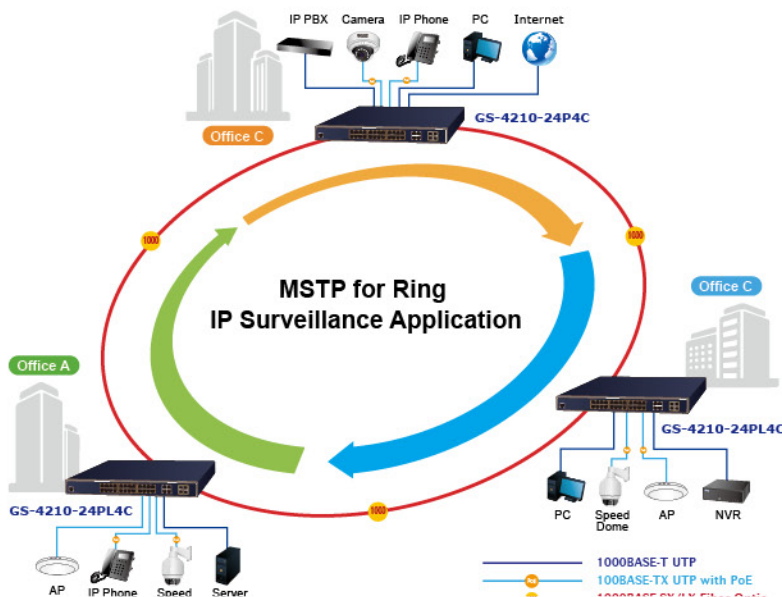
Layer 2/4 IPv4/IPv6 Managed Gigabit Switches

GS-4210 Series



PLANET GS-4210 switch series is perfectly designed for SMB and SOHO network infrastructures. Besides the hot IPv6 and IPv4 management, and abundant L2/L4 switching functions, the series of switch adopts the fanless and green technology to provide a quiet, energy saving, high-speed and reliable office network environment. It benefits the SMB and SOHO users as it is in the Gigabit network environment with a low cost of Fast Ethernet switches. The series of switch is quite suitable for the next generation network deployment and offers the lowest total cost of ownership. It is the best investment for business expansion or upgrading its network infrastructure.

- IEEE 802.1Q VLAN, Q-in-Q, Private VLAN and GVRP
- IEEE 802.1w RSTP, IEEE 802.1s MSTP and loop protection
- IGMP snooping v2 and v3, and MLD snooping
- QoS, Voice VLAN and bandwidth control
- Layer 2, 3 and 4 Access Control List
- IEEE 802.1X and RADIUS authentication
- IPv4 and IPv6 Web interface; Telnet; SNMP v1, v2c and v3; and SSH and SSL management
- PoE models support PD alive check, PoE schedule, scheduled power recycling and over temperature protection



GS-4210-16T2S

- 10/100/1000BASE-T port x 16
- 100/1000BASE-X SFP port x 2
- Fanless

GS-4210-24T2S

- 10/100/1000BASE-T port x 24
- 100/1000BASE-X SFP port x 2
- Fanless

GS-4210-24T4S

- 10/100/1000BASE-T port x 24
- 100/1000BASE-X SFP Port x 4
- 100-240V AC, 50/60Hz power supply
- Fanless

GS-4210-24T4SR

- 10/100/1000BASE-T port x 24
- 100/1000BASE-X SFP Slots x 4
- 100-240V AC, 50/60Hz and 36-72V DC redundant power
- Fanless

GS-4210-48T4S

- 10/100/1000BASE-T port x 48
- 100/1000BASE-X SFP port x 4
- Fanless

PoE Models

GS-4210-16P2S

- 10/100/1000BASE-T with 802.3at PoE+ port x 16
- 100/1000BASE-X SFP port x 2
- 220-watt PoE budget
- Up to 36 watts per PoE port

GS-4210-16P4C

- 10/100/1000BASE-T with 802.3at PoE+ port x 16
- 10/100/1000BASE-T port x 4
- 100/1000BASE-X SFP port x 4
- 240-watt PoE budget
- Up to 30 watts per PoE port

GS-4210-24P2S

- 10/100/1000BASE-T with 802.3at PoE+ port x 24
- 100/1000BASE-X SFP slots x 2
- 300-watt PoE budget
- Up to 30 watts per PoE port

GS-4210-24P4C/GS-4210-24PL4C

- 10/100/1000BASE-T with 802.3at PoE+ port x 24
- 10/100/1000BASE-T port x 4
- 100/1000BASE-X SFP port x 4
- 280/430-watt PoE budget
- Up to 30 watts per PoE port

GS-4210-48P4S

- 10/100/1000BASE-T with 802.3at PoE+ port x 48
- 100/1000BASE-X SFP port x 4
- 600-watt PoE budget
- Up to 36 watts per PoE port

GS-4210-24HP2C

- 10/100/1000BASE-T port x 26
- 100/1000BASE-X SFP Slots x 2
- 515-watt PoE Budget
- Up to 36 watts (Port1~Port20) PoE port
- Up to 95 watts PoE port (Port21~Port24)

Layer 2/4 IPv6 Desktop-size Managed Gigabit Switches



PLANET GSD and GS-4210 desktop Gigabit Switch series, the smallest Managed Gigabit Switch in the networking industry, integrates with 8-port 10/100/1000BASE-T copper and 2 extra 100/1000BASE-X SFP fiber optic interfaces in a handheld size metal case, with powerful L2 and L4 network switching engine and advanced IPv6 and IPv4 management functions inside. Without space limitation, it is easy to install the desktop-size switches, ideal for communication closet or desktop. It is ready to bring superior usability and improves user experiences.

- IEEE 802.1Q VLAN, Q-in-Q, Private VLAN and GVRP
- IEEE 802.1w RSTP, IEEE 802.1s MSTP and loop protection
- IGMP snooping v2 and v3, and MLD snooping
- QoS, Voice VLAN and bandwidth control
- Layer 2, 3 and 4 Access Control List
- IEEE 802.1X and RADIUS authentication
- IPv4 and IPv6 Web interface; Telnet; SNMP v1, v2c and v3; and SSH and SSL management

GS-4210-8T2S

- 10/100/1000BASE-T port x 8
- 100/1000BASE-X SFP port x 2
- 12-inch desktop size, 19-inch rack-mountable
- Internal power supply

GSD-1002M

- 10/100/1000BASE-T port x 8
- 100/1000BASE-X SFP port x 2
- 1 port supports 802.3af/at PoE DC 48-56V in-line power
- Compact size, wall-mount

PoE Models

GS-4210-8P2S

- 10/100/1000BASE-T with 802.3at PoE+ port x 8
- 100/1000BASE-X SFP port x 2
- 120-watt PoE budget
- 12-inch desktop size, 1U rack-mountable

GS-4210-8P2C

- 10/100/1000BASE-T with 802.3at PoE+ port x 8
- 10/100/1000BASE-T ports x 2
- 100/1000BASE-X SFP ports x 2
- 120-watt PoE budget
- 12-inch desktop size, 1U rack-mountable

GS-4210-8HP2S

- 10/100/1000BASE-T with 802.3bt PoE+ port x 2
- 10/100/1000BASE-T with 802.3at PoE+ port x 6
- 100/1000BASE-X SFP port x 2
- 240-watt PoE budget
- smart fan x 1 supporting fanless mode

Layer 2 Unmanaged Gigabit Switches

- Auto MDI/MDIX on each port
- CSMA/CD protocol
- Store-and-Forward
- MAC address learning and aging
- Flow control to eliminate packet loss
- Auto-negotiation

GSW-1601

- 10/100/1000BASE-T port x 16
- 9K jumbo frame
- 8K MAC address table
- DIP switch for standard/VLAN/Flow control/Extend mode selection
- Fanless
- 19-inch, 1U rack-mountable



GSW-2401

- 10/100/1000BASE-T port x 24
- 9K jumbo frame
- 8K MAC address table
- DIP switch for standard/VLAN/Flow control/Extend mode selection
- Fanless
- 19-inch, 1U rack-mountable



GSD-503/GSD-803

- 10/100/1000BASE-T port x 5 (GSD-503)
- 10/100/1000BASE-T port x 8 (GSD-803)
- 9K jumbo frame
- Green networking for energy saving
- Made of metal



GSD-504/GSD-804

- 10/100/1000BASE-T port x 5 (GSD-504)
- 10/100/1000BASE-T port x 8 (GSD-804)
- 9K jumbo frame
- Green networking for energy saving
- Made from plastic



GSD-603F

- 10/100/1000BASE-T port x 5
- 1000BASE-X SFP port x 1
- 9K jumbo frame
- Made of metal



GSD-805

- 10/100/1000BASE-T port x 8
- 9K jumbo frame
- Internal power supply
- Desktop/wall-mount



WGS-810

- 10/100/1000BASE-T port x 8
- 9K jumbo frame
- Green networking for energy saving
- Made of metal
- Flat-type design
- Wall-mount, magnetic wall mounting or DIN-rail mounting



Layer 2 Unmanaged Fast Ethernet Switches

FSD-503/FSD-803

- 10/100BASE-TX port x 5 (FSD-503)
- 10/100BASE-TX port x 8 (FSD-803)
- One power button
- Made of metal



SW-504/SW-804

- 10/100BASE-TX port x 5 (SW-504)
- 10/100BASE-TX port x 8 (SW-804)
- 802.1Q VLAN transparency
- Made from plastic



FNSW-1601

- 10/100BASE-TX port x 16
- 8K MAC address table
- Green networking for energy saving
- 802.1Q VLAN transparency
- 19-inch, 1U rack-mountable
- DIP switch for standard/VLAN/Flow control/Extend mode selection



FNSW-2401

- 10/100BASE-TX port x 24
- 8K MAC address table
- Green networking for energy saving
- 802.1Q VLAN transparency
- 19-inch, 1U rack-mountable
- DIP switch for standard/VLAN/Flow control/Extend mode selection

