

Reliable & Flexible Network Connectivity for **Industry 4.0**



Intelligent PoE
Management



L3 OSPF
Routing



10G
Uplink



Cyber
Security



RING

Unique Flat-type Design with Touch LCD



Intelligent Transportation System



- EN50155
- IP67 Rating

Renewable Energy PoE Switch & Management Controller



Front Access



Flat Design



PoE Usage



DIN-rail
Installation



Fiber
Connection



Magnetic
Installation

Industrial Ethernet

Unique Flat-type Design for Easy Management

To facilitate the network deployment in any space-limited locations like wall enclosure or electric box found in buildings or outdoors, PLANET has the industrial Ethernet switches and wireless AP designed in a compact flat type. The products can be installed by fixed wall mounting, magnetic wall mounting or DIN rail, thereby making its usability more flexible.



Industry-leading Integration of PoE Technology and Renewable Energy

PLANET Industrial Renewable Energy PoE Switch utilizes the inexhaustible and natural source of energy, such as solar, wind and hydroelectric power to conserve energy, and incorporates 802.3at high power PoE technology to enable network deployment anywhere without any obstacles of geographical barrier. It greatly accelerates the installations of wireless LAN or IP surveillance systems in remote areas.

EN50155 Ready for Intelligent Transportation Systems

Bringing uninterrupted operation and reliable network transmission for rolling stock applications, PLANET EN50155 compliant Industrial Ethernet Switches provide waterproof M12/RJ45 interfaces and guarantee stable Ethernet operation performance under high vibration and shock environment. The switches also feature wide-ranging operating temperature, redundant ring recovery, and intelligent PoE PD and power management functions, ensuring the highest level of reliability for mission-critical applications in any difficult environment.



Layer 3 and Layer 2 Industrial Managed Gigabit Switches

PLANET Industrial Ethernet Switches are industrially hardened to be specially designed to operate reliably in electrically harsh and climatically demanding environment. PLANET Layer 3 and Layer 2 Industrial Managed Switches, with model names starting with IGS or IGSW, include Managed Switches, Unmanaged Switches and PoE Switches. They all support full Gigabit port. The capital 'T' in the model name means that the product can support and operate under wide-ranging temperature from -40 to 75 degrees C.

Redundant Ring and Fast Recovery for Surveillance System

The IGS and IGSW series features strong, rapid self-recovery capability to prevent interruptions and external intrusions. It incorporates advanced ITU-T G.8032 ERPS (Ethernet Ring Protection Switching) technology, Spanning Tree Protocol (802.1s MSTP), and redundant power input system into customer's industrial automation network to enhance system reliability and uptime in harsh factory environments. In certain simple ring network, the recovery time of data link can be as fast as 20ms.

IGS-6325-20T4C4X

- 24-port 10/100/1000BASE-T
- 4-port 100/1000BASE-X SFP
- 4-port 1G/2.5G/10GBASE-X SFP+
- IPv6/IPv4 Web, Telnet and SNMP management
- 802.1Q VLAN, MSTP and IGMP snooping
- ERPS ring supported
- L3 static route and OSPFv2 supported
- DI and DO supported
- 19-inch, 1U rack-mountable
- 100~240V AC and 24~60V DC redundant power system



IGS-6325-20S4C4X

- 4-port 10/100/1000BASE-T
- 14-port 100/1000BASE-X SFP
- 10-port 100/1G/2.5GBASE-X SFP
- 4-port 1G/2.5G/10GBASE-X SFP+
- IPv6/IPv4 Web, Telnet and SNMP management
- 802.1Q VLAN, MSTP and IGMP snooping
- ERPS ring supported
- Static route and OSPFv2 supported
- DI and DO supported
- 100~240V AC and 24~60V DC redundant power system
- EN 61000-6-2, EN 61000-6-4



IGS-5225-16T4S/IGSW-24040T

- 16/24-port 10/100/1000BASE-T
- 4-port 100/1000BASE-X SFP
- IPv6/IPv4 Web, Telnet and SNMP management
- 802.1Q VLAN, MSTP and IGMP snooping
- DI and DO supported
- ERPS ring supported
- 19-inch, 1U rack-mountable
- 100~240V AC and 36~60V DC redundant power system



IGS-6325-8T8S4X/IGS-6325-8T8S IGS-6325-8T4X

- 8-port 10/100/1000BASE-T
- 8-port 100/1G/2.5GBASE-X SFP
- 4-port 10G BASE-X SFP+ (IGS-6325-8T8S4X)
- IPv6/IPv4 Web, Telnet and SNMP management
- 802.1Q VLAN, MSTP and IGMP snooping
- ERPS ring supported
- IEEE 1588 PTP TC supported
- Static route and OSPFv2 supported
- -40~75 degrees C wide operating temperature
- DI and DO supported



IGS-5225-8T2S2X

- 8-port 10/100/1000BASE-T
- 2-port 100/1G/2.5GBASE-X SFP
- 2-port 10G BASE-X SFP+
- IPv6/IPv4 Web, Telnet and SNMP management
- 802.1Q VLAN, MSTP and IGMP snooping
- ERPS ring supported
- IEEE 1588 PTP TC supported
- Static route and OSPFv2 supported
- -40~75 degrees C wide operating temperature
- DI and DO supported



IGS-20040MT

- 16-port 10/100/1000BASE-T
- 2-port 100/1000BASE-X SFP
- 2-port 100/1G/2.5GBASE-X SFP
- IPv6/IPv4 Web, Telnet and SNMP management
- 802.1Q VLAN, MSTP and IGMP snooping
- ERPS ring supported
- Static route supported
- DI and DO supported



IGS-12040MT

- 8-port 10/100/1000BASE-T
- 2-port 100/1000BASE-X SFP
- 2-port 100/1G/2.5GBASE-X SFP
- IPv6/IPv4 Web, Telnet and SNMP management
- 802.1Q VLAN, MSTP and IGMP snooping
- ERPS ring supported
- Static route supported
- DI and DO supported



IGS-10080MFT/IGS-10020MT

- 6-port 100/1000BASE-X SFP (IGS-10080MFT)
- 2-port 10/100/1000BASE-T (IGS-10080MFT)
- 8-port 10/100/1000BASE-T (IGS-10020MT)
- 2-port 100/1G/2.5GBASE-X SFP
- IPv6/IPv4 Web, Telnet and SNMP management
- 802.1Q VLAN, MSTP and IGMP snooping
- ERPS ring supported
- Static route supported



IGS-5225-4T2S

- 4-port 10/100/1000BASE-T
- 2-port 100/1000BASE-X SFP
- IPv6/IPv4 Web, Telnet and SNMP management
- 802.1Q VLAN, MSTP and IGMP snooping
- ERPS ring supported
- Static route supported



IGS-4215-16T2S

- 16-port 10/100/1000BASE-T
- 2-port 100/1000BASE-X SFP
- IPv6/IPv4 Web, Telnet and SNMP management
- 802.1Q VLAN, MSTP and IGMP snooping
- Loop protection
- QoS, bandwidth control, storm control, Layer3/4 access control list
- ERPS Ring and Loop protection supported



IGS-4215-8T2S

- 8-port 10/100/1000BASE-T
- 2-port 100/1000BASE-X SFP
- IPv6/IPv4 Web, Telnet and SNMP management
- 802.1Q VLAN, MSTP and IGMP snooping
- ERPS Ring and Loop protection supported
- QoS, bandwidth control, storm control, Layer 3/4 access control list



IGS-4215-4T2S

- 4-port 10/100/1000BASE-T
- 2-port 100/1000BASE-X SFP
- IPv6/IPv4 Web, Telnet and SNMP management
- 802.1Q VLAN, MSTP and IGMP snooping
- ERPS Ring and Loop protection supported
- QoS, bandwidth control, storm control, Layer 3/4 access control list



IGS-801M

- 8-port 10/100/1000BASE-T
- IPv6/IPv4 Web, Telnet and SNMP management
- 802.1Q VLAN, MSTP and IGMP snooping
- Loop protection
- QoS, bandwidth control, storm control, Layer3/4 access control list



Layer 2 Industrial Gigabit Switches

PLANET advanced industrial hardened Ethernet Switch series comes with a slim type, IP30 metal case. The compact IP30 standard metal case allows either DIN rail or wall mounting for efficient use of cabinet space. The capital 'T' in the model name means that the product can support and operate under wide-ranging temperature from -40 to 75 degrees C.

The Layer 2 Industrial Switch series incorporates redundant power supply system into customer's industrial automation network to enhance system reliability and uptime in the factory harsh environments. It protects customer's industrial network connectivity with power redundant ability. They provide IP30 metal case and 100BASE-FX port or Gigabit TP/SFP combo interfaces for long-distance uplink.

IGS-500T/IGS-510TF/IGS-501T

- 5-port 10/100/1000BASE-T
- -40 to 75 degrees C wide-ranging temperature
- IP30 metal case
- EEE (IGS-500T)
- Compact size (IGS-500T/IGS-510TF)
- 100/1000X SFP (IGS-510TF)



IGS-801T

- 8-port 10/100/1000BASE-T
- -40 to 75 degrees C wide-ranging temperature
- IP30 metal case
- EEE



IGS-1600T/IGS-1820TF

- 16-port 10/100/1000BASE-T
- 2-port 1000BASE-X SFP (IGS-1820TF)
- -40~75 degrees C wide-ranging temperature
- IP40 metal case
- 12~48V DC, 24V AC redundant power



IGS-620TF

- 4-port 10/100/1000BASE-T
- 2-port 100/1000BASE-X SFP (DIP control)
- -40 to 75 degrees C wide-ranging temperature
- IP30 metal case
- Dual SFP ports with auto link redundancy via DIP selection



IGS-1020TF

- 10/100/1000BASE-T x 8 ports
- 100/1000BASE-X SFP x 2 ports
- IEEE 802.3az EEE Protocol based power saving
- 12 ~ 48V DC, 24V AC redundant power
- -40 to 75 degree C operating temperature
- IP 30 metal case, DIN rail and wall mount design



IGT-1205AT

- 1-port 10/100/1000BASE-T
- 2 x SFP interfaces compatible with 100FX/1000SX/LX (DIP control)
- -40 to 75 degrees C wide-ranging temperature
- IP30 metal case
- Dual SFP ports with auto link redundancy via DIP selection



Layer 2 Industrial Fast Ethernet Switches

ISW-500T/ISW-800T

- 5/8-port 10/100BASE-TX
- -40 to 75 degrees C operating temperature
- IP30 metal case
- EEE



ISW-501T/ISW-801T

- 5/8-port 10/100BASE-TX
- -40 to 75 degrees C wide operating temperature
- IP30 metal case
- EEE



ISW-511T/ISW-511TS15

- 4-port 10/100BASE-TX
- 1-port 100BASE-FX
- Supports multi-mode fiber, 2km/15km distance
- -40 to 75 degrees C wide operating temperature
- IP30 metal case



ISW-621T/ISW-621TS15

- 4-port 10/100BASE-TX
- 2-port 100BASE-FX
- Supports multi-mode fiber, 2km/15km distance
- -40 to 75 degrees C wide operating temperature
- IP30 metal case



ISW-621TF

- 4-port 10/100BASE-TX
- 2-port 100BASE-FX SFP
- -40 to 75 degrees C wide operating temperature
- IP30 metal case



IFGS-1022TF

- 8-port 10/100BASE-TX
- 2-port Gigabit TP/SFP combo interface
- -40~75 degrees C wide operating temperature
- IP30 metal case
- Dual DC 9~48V, AC 24V power input



ISW-1600T

- 16-port 10/100BASE-TX
- -40 to 75 degrees C wide operating temperature
- IP30 metal case



IFGS-1822TF

- 16-port 10/100BASE-TX
- 2-port Gigabit TP/SFP combo interface
- -40 to 75 degrees C wide operating temperature
- IP30 metal case



Layer 3 and Layer 2 Industrial Managed Gigabit PoE Switches

PLANET Industrial Managed PoE Switch series in-line power follows standard IEEE 802.3af, IEEE 802.3at or IEEE 802.3bt and is able to give power to PoE compliant devices at the distance up to 100 meters through the 4-pair Cat. 5/5e UTP wire. With data and Power over Ethernet from one unit, the industrial PoE series can reduce cable deployment and eliminate the need for dedicated electrical outlets on the wall, ceiling or any unreachable place. Carrying PLANET's uniquely Intelligent PoE Functions such as PoE schedule, scheduled power recycling and PD alive check, the Industrial Managed PoE Switch Series greatly enhances the efficiency of network management and helps to save power and cost for the hardened network.

IGS-6329-8UP2S2X/ IGS-6329-8UP2S4X

- EN 61000-6-2 and EN 61000-6-4
- 8-port 10/100/1000BASE-T with 802.3bt PoE++
- 2-port 1G/2.5GBASE-X SFP
- 2-/4-port 1G/2.5G/10GBASE-X SFP+
- 360-watt PoE budget/remote PoE power control
- 48~54V DC redundant power design
- ERPS ring supported
- L3 RIP and OSPFv2/v3 supported
- DI and DO support



IGS-6325-24P4X/ IGS-6325-24P4S

- 24-port 10/100/1000BASE-T
- 4-port 100/1000BASE-X SFP
- 4-port 1G/2.5G/10GBASE-X SFP+
- L3 static route and OSPFv2 supported
- 400-watt PoE budget/remote power control
- IPv6/IPv4 Web, Telnet and SNMP management
- ERPS ring supported
- -40~75 degrees C wide operating temperature



IGS-6325-16P4S

- 16-port 10/100/1000BASE-T with 802.3at PoE+
- 4-port 100/1G/2.5GBASE-X SFP
- IPv6/IPv4 Web, Telnet and SNMP management
- ERPS ring supported
- -40~75 degrees C wide operating temperature
- DI and DO supported
- L3 Static route and OSPFv2 supported



Layer 3 and Layer 2 Industrial Managed Gigabit PoE Switches

IGS-6325-8UP2S2X/ IGS-6325-8UP2S

- 8-port 10/100/1000BASE-T with 802.3bt PoE++
- 360-watt PoE budget/remote PoE power control
- -40 ~ 75 degrees C wide operating temperature
- 48 ~ 56V DC redundant power design
- IEEE 802.1w/1s STP, IEEE 802.1Q VLAN and IGMP snooping v2 and v3
- ERPS ring supported
- L3 static route and OSPFv2 supported
- DI and DO supported

802.3bt
PoE++



Layer
3

10G

IGS-5225-8P2S2X

- 8-port 10/100/1000BASE-T with 802.3at PoE+
- 240-watt PoE budget/remote PoE power control
- -40 ~ 75 degrees C wide operating temperature
- 48 ~ 56V DC redundant power design
- IEEE 802.1w/1s STP, IEEE 802.1Q VLAN and IGMP snooping v2 and v3
- ERPS ring supported
- L3 static route and OSPFv2 supported
- DI and DO supported

10G

Modbus
TCP



Cyber
Security

Layer
3

IGS-20160HPT

- 16-port 10/100/1000BASE-T with 802.3at PoE+
- 2-port 10/100/1000BASE-T
- 2-port 100/1000BASE-X SFP
- IPv6/IPv4 Web, Telnet and SNMP management
- 802.1Q VLAN, MSTP and IGMP snooping
- ERPS ring supported
- Static route supported
- -40 to 75 degrees C wide operating temperature
- DI and DO supported

Layer
3

Modbus
TCP



IGS-5225-8P2T2S/IGS-5225-8P4S/ IGS-5225-8P2T4S

- 8-port 10/100/1000BASE-T with 802.3at PoE+
- 2-port 10/100/1000BASE-T (IGS-5225-8P2T2S)
- 2/4-port 100/1000BASE-X SFP
- IPv6/IPv4 Web, Telnet and SNMP management
- 802.1Q VLAN, MSTP and IGMP snooping
- ERPS ring supported
- Static route supported
- -40~75 degrees C wide operating temperature
- DI and DO supported

Cyber
Security

IEEE 1588

Modbus
TCP



IGS-10020HPT/IGS-10020PT

- 8-port 10/100/1000BASE-T with 802.3af/at PoE+
- 2-port 100/1G/2.5GBASE-X SFP
- IPv6/IPv4 Web, Telnet and SNMP management
- 802.1Q VLAN, MSTP and IGMP snooping
- ERPS ring supported
- Static route supported
- -40 to 75 degrees C wide operating temperature
- DI and DO supported
- 12~48V DC redundant power (IGS-10020HPT)



Modbus
TCP

eMARK

IGS-5225-4UP1T2S

- 4-port 10/100/1000BASE-T with 802.3bt/802.3at PoE
- 1-port 10/100/1000BASE-T
- 2-port 100/1000BASE-X SFP
- IPv6/IPv4 Web, Telnet and SNMP management
- 802.1Q VLAN, MSTP and IGMP snooping
- ERPS ring supported
- Static route supported
- -40 to 75 degrees C wide operating temperature
- DI and DO supported

Cyber
Security

802.3bt
PoE++

Modbus
TCP



IGS-5225-4P2S

- 4-Port 10/100/1000BASE-T with 802.3at PoE+
- 2-Port 100/1000BASE-X SFP
- IPv6/IPv4 Web, Telnet and SNMP management
- 802.1Q VLAN, MSTP and IGMP snooping
- ERPS ring supported
- Static route supported
- -40~75 degrees C wide operating temperature

Cyber
Security

IEEE 1588

Modbus
TCP



IGS-4215-8P2T2S

- 8-port 10/100/1000BASE-T with 802.3at PoE+
- 2-port 10/100/1000BASE-T
- 2-port 100/1000BASE-X SFP
- IPv6/IPv4 Web, Telnet and SNMP management
- 802.1Q VLAN, MSTP and IGMP snooping
- -40 to 75 degrees C wide operating temperature
- ERPS Ring and Loop protection supported



IGS-4215-4P4T2S/IGS-4215-4P4T

- 4-port 10/100/1000BASE-T with 802.3at PoE+
- 4-port 10/100/1000BASE-T
- 2-port 100/1000BASE-X SFP (IGS-4215-4P4T2S)
- IPv6/IPv4 Web, Telnet and SNMP management
- 802.1Q VLAN, MSTP and IGMP snooping
- -40 to 75 degrees C wide operating temperature



Layer 2 Industrial PoE Switches/Extenders

PLANET industrial PoE switch series in-line power follows standard IEEE 802.3af, IEEE 802.3at and IEEE 802.3bt and is able to give power to PoE compliant devices at the distance up to 100 meters through the 4-pair CAT5/5e UTP wire. As un-managed industrial PoE switch offers very easy-to-use Power over Ethernet function, customer just needs to connect their PoE device to un-managed industrial PoE switch, and just plug and play.

ISW-504PT

- 4-port 10/100BASE-TX with 802.3at PoE
- 1-port 10/100BASE-TX
- -40 to 75 degrees C wide operating temperature
- IP40 metal case
- 12~48V DC redundant power design
- 250m in distance with 25-watt power output in Extend mode



ISW-514PTF

- 4-port 10/100BASE-TX with 802.3at PoE
- 1-port 100BASE-FX SFP
- -40 to 75 degrees C wide operating temperature
- IP40 metal case
- 12~48V DC redundant power design
- 250m in distance with 25-watt power output in Extend mode



IFGS-1022HPT

- 8-port 10/100BASE-TX with 802.3at PoE+
- 2-port Gigabit TP/SFP combo for uplink
- 240-watt PoE budget
- -40 to 75 degrees C wide operating temperature
- IP30 metal case
- 250m in distance with 30-watt power output in Extend mode



IGS-504PT/IGS-504HPT

- 4-port 10/100/1000BASE-T with 802.3at PoE+
- 1-port 10/100/1000BASE-T
- Smart PoE power usage LED indicator
- -40 to 75 degrees C wide operating temperature
- IP30 metal case



IGS-624HPT/IGS-614HPT

- 4-port 10/100/1000BASE-T with 802.3at PoE+
- 2-port 100/1000BASE-X SFP (DIP Control)
- Dual SFP Ports Auto Link Redundant
- Mode supported (IGS-624HPT)
- Smart PoE power usage LED indicator
- -40 to 75 degrees C wide operating temperature
- IP30 metal case



IGS-1020PTF/IGS-1020PTF-12V

- 8-port 10/100/1000BASE-T with 802.3at PoE+
- 2-port 100/1000BASE-X SFP combo for uplink
- 240-watt PoE budget
- -40 to 75 degrees C wide operating temperature
- IP30 metal case
- 12~48V DC redundant power design
- 250m in distance with 25-watt power output in Extend mode



IGS-824UPT

- 4-port 10/100/1000BASE-T with 802.3bt PoE++
- 2-port 10/100/1000BASE-T
- 2-port 100/1000BASE-X SFP
- 240-watt PoE budget
- -40~75 degrees C operating temperature
- Supports PoH PoE and Legacy detection



IPOE-E302

- IP67 aluminum case, outdoor installation
- Waterproof/dustproof RJ45 Ethernet connector
- 1-port IEEE 802.3bt PoE++ PD
- 2-port IEEE 802.3at PoE PSE
- Max. total PoE budget up to 60 watts
- -40 to 75 degrees C operating temperature
- Extends Cat.5 cable installations to beyond 100 meters



IPOE-E174

- Forwards both Ethernet data and in-line power to 4 remote devices
- 1-port ultra Power over Ethernet PD
- 4-port IEEE 802.3af/at Power over Ethernet/end-span PSE
- Supports PoE output power up to 30.8 watts for each PoE port
- Extends the range of PoE for an additional 100 meters (328ft.)
- -40 to 75 degrees C wide operating temperature



EN50155 ITS Ethernet Network Solution



IGS-5227X-4P2T

- IP67 aluminum case, outdoor installation
- Waterproof and dustproof M12 Ethernet connector against vibration and shock
- -40 to 75 degrees C wide operating temperature
- 12~48V DC redundant power design
- 144-watt PoE budget/remote PoE power control
- PoE schedule, scheduled power recycling and PD alive check functions
- ERPS Ring Data Recovery time < 50ms
- IPv4/IPv6 Layer 3 static routing and route summarization

802.3at
PoE

M12

Power
Boost



IGS-604HPT-M12

- IP67 aluminum case, outdoor installation
- Waterproof and dustproof M12 Ethernet connector against vibration and shock
- -40 to 75 degrees C wide operating temperature
- 48~56V DC redundant power design
- 144-watt PoE budget/remote PoE power control
- PoE Schedule, Scheduled Power Recycling and PD Alive Check functions
- ERPS Ring Data Recovery time < 50ms
- IPv4/IPv6 Layer 3 static routing and route summarization

M12

802.3at
PoE



IGS-604HPT-RJ

- IP67 aluminum case, outdoor installation
- Waterproof/dustproof RJ45 Ethernet connector
- 4-port 10/100/1000BASE-T with 802.3at PoE+
- 2-port 10/100/1000BASE-T
- PD alive check, scheduled power recycling and time-based PoE schedule
- IPv6 and IPv4 Web, Telnet and SNMP management
- 802.1Q VLAN, MSTP and IGMP snooping
- ERPS ring supported
- Static route supported
- -40 to 75 degrees C wide operating temperature



RJ45

802.3at
PoE



IGS-5226-4P2T

- IP50 metal case
- IEEE 1588 and synchronous Ethernet network timing
- IPv6/IPv4 Layer 3 static routing and route summarization
- 144-watt PoE budget, remote PoE power control
- 48~56V DC redundant power design
- ERPS Ring Data Recovery time < 50ms
- -40 to 75 degrees C wide operating temperature

M12

802.3at
PoE



IGS-5227-6MT-X

- IP67 aluminum case, outdoor installation
- Waterproof and dustproof M12 Ethernet connector against vibration and shock
- -40 to 75 degrees C wide operating temperature
- 12~48V DC redundant power design
- ERPS Ring Data Recovery time < 50ms
- IPv4/IPv6 Layer 3 static routing and route summarization

M12



IGS-5227-6T

- IP67 aluminum case, outdoor installation
- Waterproof/dustproof RJ45 Ethernet connector
- 6-port 10/100/1000BASE-T
- IPv6 and IPv4 Web, Telnet and SNMP management
- 802.1Q VLAN, MSTP and IGMP snooping
- ERPS ring supported
- Static route supported
- -40 to 75 degrees C wide operating temperature

RJ45



WGS-5225-8MT

- IP30 metal case, flat-type design
- Dustproof M12 Ethernet connector against vibration and shock
- 8-port 10/100/1000BASE-T
- Bypass relay prevents link failure during power loss
- 9~48V DC redundant power design
- ERPS ring supported
- Layer 3 static route supported

Bypass
Relay

M12

ERPS



ISW-808PT-M12A/ ISW-808PT-M12

- 8-port 10/100BASE-TX with 802.3af/at PoE
- IP67 aluminum case
- Robust M12 Ethernet connector
- -40 to 75 degrees C wide operating temperature

802.3at
PoE

M12



ISW-800T-M12

- 8-port 10/100BASE-TX
- IP67 aluminum case
- Robust M12 Ethernet connector
- Waterproof and dustproof
- -40 to 75 degrees C wide operating temperature

M12



Layer 2 Industrial Flat-type Ethernet Switches

WGS-5225-8P2SV

- 2.4-inch color LCD touch screen with management functions
- 8-port 10/100/1000BASE-T with 802.3at PoE+
- 2-port 100/1G/2.5GBASE-X SFP
- 802.1Q VLAN, MSTP and IGMP Snooping
- ERPS ring and IEEE 1588 supported
- Static route supported
- Modbus TCP
- PoE schedule, scheduled power recycling, PD alive check



WGS-5225-8T2SV

- 2.4-inch color LCD touch screen with management functions
- 8-port 100/1G/2.5G/1000BASE-T
- 2-port 100/1G/2.5GBASE-X SFP
- 802.1Q VLAN, MSTP and IGMP Snooping
- ERPS ring and IEEE 1588 supported
- Static route supported
- Modbus TCP



WGS-5225-8P2S

- 8-port 10/100/1000BASE-T with 802.3at PoE+
- 2-port 100/1G/2.5GBASE-X SFP
- 802.1Q VLAN, MSTP and IGMP Snooping
- ERPS ring and IEEE 1588 supported
- Static route supported
- Modbus TCP
- PoE schedule, scheduled power recycling, PD alive check



WGS-5225-8MT

- IP30 metal case, flat-type design
- Dustproof M12 Ethernet connector against vibration and shock
- 8-port 10/100/1000BASE-T
- Bypass relay prevents link failure during power loss
- 9~48V DC redundant power design
- ERPS ring supported
- Layer 3 static route supported



WGS-5225-8UP2SV

- 2.4-inch color LCD touch screen with management function
- 8-port 10/100/1000BASE-T with 802.3bt PoE++
- 2-port 100/1G/2.5GBASE-X SFP
- 720-watt PoE budget
- ERPS ring supported
- Layer 3 static route supported
- PoE schedule, scheduled power recycling, PD alive check



WGS-4215-16P2S

- 16-port 10/100/1000T with 802.3at PoE+
- 2-port 100/1000X SFP
- -10 to 60 degrees C wide operating temperature
- 48~56V DC dual power input
- 200-watt PoE budget, up to 16 PoE port
- PD alive check, scheduled power recycling and time-based PoE schedule
- IPv6 and IPv4 Web; Telnet; SNMPv1, v2c, v3; SSH/SSL management
- QoS, bandwidth control, storm control, Layer 3/4 access control list
- STP/RSTP/MSTP, LACP



WGS-4215-8HP2S

- 4-port 10/100/1000BASE-T with 802.3bt PoE++
- 4-port 10/100/1000BASE-T with 802.3at PoE+
- 2-port 100/1GBASE-X SFP
- 360-watt PoE budget
- ERPS ring supported
- PoE schedule, scheduled power recycling, PD alive check
- IPv6/IPv4 Web/TLS; Telnet/SSHv2; SNMPv1/v2c/v3 management



WGS-4215-8P2S

- 8-port 10/100/1000T with 802.3at PoE+
- 2-port 100/1000X SFP
- -40 to 75 degrees C wide operating temperature
- 48~56V DC dual power input
- 200-watt PoE budget, up to 8 PoE port
- PD alive check, scheduled power recycling and time-based PoE schedule
- IPv6 and IPv4 Web; Telnet; SNMPv1, v2c, v3; SSH/SSL management
- QoS, bandwidth control, storm control, Layer 3/4 access control list
- STP/RSTP/MSTP, LACP



WGS-4215-8T2S/WGS-4215-8T

- 8-port 10/100/1000BASE-T
- 2-port 100/1000BASE-X SFP(WGS-4215-8T2S)
- -40 to 75 degrees C wide operating temperature
- 24V AC and 12~48V DC redundant power
- Compact size, magnetic wall mount and DIN-rail design
- IPv6 and IPv4 Web, Telnet and SNMP management
- 802.1Q VLAN, MSTP and IGMP snooping



WGS-804HPT

- 4-port 10/100/1000BASE-T with 802.3at PoE+
- 4-port 10/100/1000BASE-T
- -40 to 75 degrees C wide operating temperature
- 48~56V DC redundant power
- Compact size, magnetic wall mount and DIN-rail design
- IPv6 and IPv4 Web, Telnet and SNMP management
- 802.1Q VLAN, MSTP and IGMP snooping
- LED indicators for PoE usage and status



WGS-818HP/WGS-814HP WGS-804HP

- 4-port 10/100/1000BASE-T with 802.3at PoE+
- 4-port 10/100/1000BASE-T
- -10 to 60 degrees C operating temperature
- 48~56V DC redundant power
- Compact size, magnetic wall mount and DIN-rail design
- LED indicators for PoE usage and status
- 250m in distance in Extend mode



WGS-803/WGS-810

- 8-port 10/100/1000BASE-T
- -10 to 60 degrees C operating temperature
- 24V AC and 12~48V DC redundant power
- Compact size, magnetic wall mount and DIN-rail design
- 250m in distance in Extend mode



Industrial Flat-type Gigabit Routers

WGR-500-4PV

- 2.4-inch color LCD touch screen with management functions
- 4-port 10/100/1000BASE-T with 802.3at PoE+
- 802.1Q VLAN and IGMP proxy
- PoE schedule, scheduled power recycling, PD alive check
- IPv6 support for IoT Networking
- Secure firewall protection
- VLAN support for isolated traffic and security



WGR-500-4P

- 4-port 10/100/1000BASE-T with 802.3at PoE+
- 802.1Q VLAN and IGMP proxy
- PoE schedule, scheduled power recycling, PD alive check
- IPv6 support for IoT Networking
- Secure firewall protection
- VLAN support for isolated traffic and security



WGR-500

- 4-port 10/100/1000-T LAN and 1-port 10/100/1000-T WAN
- 802.1Q VLAN and IGMP proxy
- IPv6 support for IoT Networking
- Secure firewall protection
- VLAN support for isolated traffic and security



Renewable Energy PoE Switches & Management Controller Series

BSP-360

- 4-port 10/100/1000BASE-T with 802.3at PoE+
- 1-port 10/100/1000BASE-T WAN
- 1 24V DC power output terminal block
- -10~60 degrees C operating temperature
- MPPT Charge Controller
- Web interface for remote management
- USB backup

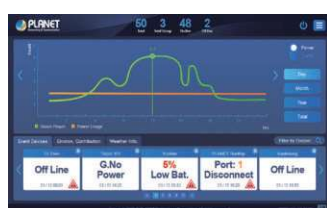


NMS-360/NMS-360V

- Auto discovery of up to 512 BSP-360 switches and up to 1024 PoE IP cameras
- Central provisioning and remotely control over each managed device
- Dashboard for Green Power, PoE Usage, Traffic and Device Event
- Setup Wizard, and e-mail alarm notification
- Map viewing and IP cam snapshots
- Backup and restoration via USB 3.0
- Stylish 10" TFT-LCD touch screen display (NMS-360V)



NMS-360 Series Intuitive Management Interface



Dashboard

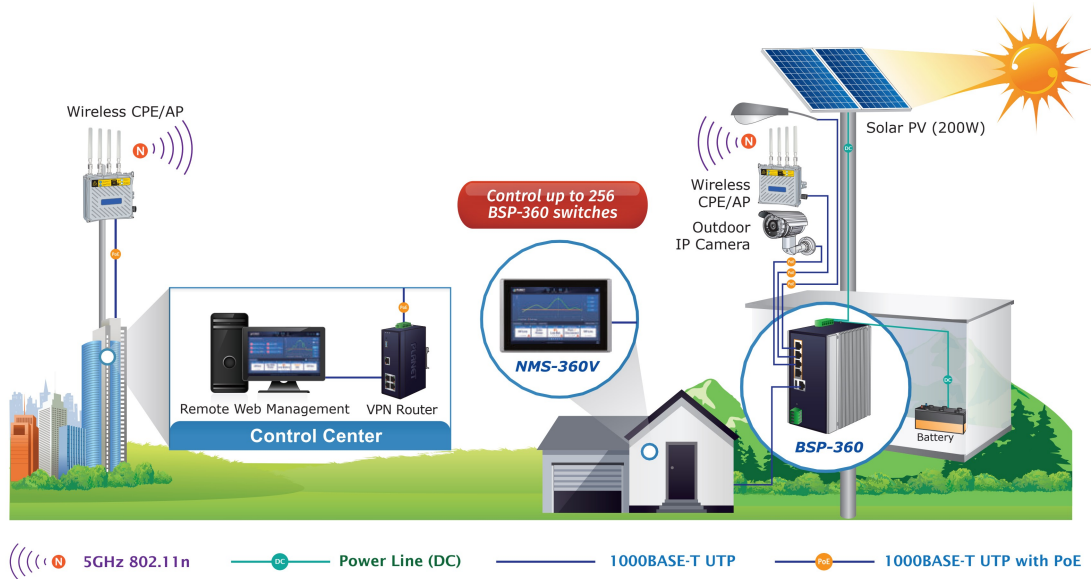


Device List



Device Information

Renewable Energy Off-Grid PoE+ Network System Application



Industrial Ethernet Extenders

IVC-234GT

- Long reach Ethernet and extended transmission distance:
 - Up to 1.2km (3,937 ft) over coaxial cable
 - Up to 1.2km (3,937 ft) over twisted phone wire
- Up to 200Mbps/100Mbps transmission performance under 200m (656 ft)
- -40 to 75 degrees C wide-ranging operating temperature
- 12~48V DC redundant power
- IP30 metal case
- 4-port 10/100/1000BASE-T Gigabit LAN



Industrial PoE Injectors & Splitters

IPOE-162

- 10/100/1000BASE-T
- Distance up to 100m with 30W power output
- -40 to 75 degrees C wide operating temperature
- 12~48V DC redundant power
- IP30 metal case



IPOE-162S

- 10/100/1000BASE-T
- 12/24V DC power output by DIP switch
- -40 to 75 degrees C wide operating temperature
- IP30 metal case



IPOE-171-60W

- 10/100/1000BASE-T
- Distance up to 100m with 60W power output
- -40 to 75 degrees C wide operating temperature
- IP30 metal case



IPOE-171-95W

- 10/100/1000BASE-T
- Distance up to 100m with 95W power output
- -40 to 75 degrees C wide operating temperature
- IP30 metal case



IPOE-173S

- Compliant with 802.3bt PoE++ PD
- 10/100/1000BASE-T
- 12/24V DC power output by DIP switch
- -40 to 75 degrees C wide operating temperature
- IP30 metal case



IPOE-165

- Up to 30 watts of PoE power on UTP
- Data and power over one Ethernet cable up to 100 meters
- IP67 and IK10-rated aluminum case
- -40~75 degrees C wide operating temperature
- 24~56V DC to 54V power boost technology



IPOE-175

- Up to 60 watts of PoE power on 4-pair UTP
- Data and power over one Ethernet cable up to 100 meters
- IP67 and IK10-rated aluminum case
- -40~75 degrees C wide operating temperature
- 24~56V DC to 55V power boost technology



IPOE-175S

- Supports 12V DC, 60-watt power output
- IP67 and IK10-rated aluminum case
- -40~75 degrees C wide operating temperature
- Compliant with IEEE 802.3bt PoE++ PD
- Supports 10/100/1G applications



IPOE-260/IPOE-260-12V

- 10/100/1000BASE-T "Data" input port x 2
- 10/100/1000BASE-T "Data + Power" output port x 2
- -40 to 75 degrees C operating temperature
- IP30 metal case, DIN-rail and wall-mountable



IPOE-270/IPOE-270-12V

- 10/100/1G/2.5G/5GBASE-T "Data" input port x 2
- 10/100/1G/2.5G/5GBASE-T "Data + Power" output port x 2
- Up to 90-watt of PoE power on 4-pair UTP
- 180-watt PoE budget
- -40~75 degrees C wide operating temperature
- IP30 metal case, DIN-rail and wall-mountable



IPOE-470/IPOE-470-12V

- 10/100/1000BASE-T "Data" input port x 4
- 10/100/1000BASE-T "Data + Power" output port x 4
- Up to 95-watt of PoE power on 4-pair UTP
- 240-watt PoE budget
- -40~75 degrees C wide operating temperature
- IP30 metal case, DIN-rail and wall-mountable



Industrial PoE Media Converters

PLANET Industrial PoE Media Converter series combines Ethernet media conversion (from 1000BASE-X to 10/100/1000BASE-T) with 802.3at PoE+ injector delivered in an IP30 rugged strong case. With data and power over Ethernet from one unit, the Industrial PoE Media Converter series can reduce cable deployment and eliminate the need for dedicated electrical outlets on the wall, ceiling or any unreachable place.

IGTP-802T/IGTP-802TS

- 1-port 10/100/1000BASE-T 802.3at PoE+
- 1-port 1000BASE-SX multi-mode, 220/550 meters (IGTP-802T)
- 1-port 1000BASE-LX single mode, 10km (IGTP-802TS)
- -40 to 75 degrees C wide operating temperature.
- IP30 metal case
- 12~48V DC redundant power



IGTP-805AT/IGTP-815AT

- 1-port 10/100/1000BASE-T 802.3at PoE+
- 1-port 100/1000BASE-X SFP
- -40 to 75 degrees C wide operating temperature.
- Compact IP30 metal case
- 12~48V DC power input (IGTP-805AT)
- 48~56V DC power input (IGTP-815AT)



IGTP-825AT

- 1-port 10/100/1000BASE-T 802.3at PoE+
- 1-port 1000BASE-X SFP
- Up to 30 watts of PoE power on UTP
- IP67 and IK10-rated aluminum case
- -40~75 degrees C wide operating temperature
- 24~56V DC to 54V power boost technology



IGUP-805AT

- 1-port 10/100/1000BASE-T 802.3bt PoE++ type-4 PSE
- 1-port 100/1000BASE-X SFP
- -40 to 75 degrees C wide operating temperature.
- 12~56V DC redundant power
- DIP switch for 802.3bt/PoH/Force mode control
- DIP switch for Link Fault Passthrough PoE control



IGUP-1205AT/IGUP-2205AT

- 1-/2-port 10/100/1000BASE-T 802.3bt PoE++ type-4 PSE
- 2-port 100/1000BASE-X SFP
- -40 to 75 degrees C wide operating temperature.
- 12~56V DC redundant power
- 90W/180W PoE budget
- DIP switch for 802.3bt/PoH/Force mode control



Industrial Fiber over Ethernet Media Converters

PLANET Industrial Fiber over Ethernet Media Converter Solution is designed to withstand extreme temperatures to ensure stable operations in harsh industrial conditions. It also provides the dynamic status report and real-time alarm messages that make monitoring and managing the entire industrial networks easy.

PLANET provides the Industrial Media Converters with various fiber-optic interfaces to convert signals via 10G, Gigabit, and Fast Ethernet ports.

- IXT series – allows the signal to convert between fiber-optic interface and 10G port
- IGT series – allows the signal to convert between fiber-optic interface and Gigabit Ethernet port
- IFT series – allows the signal to convert between fiber-optic interface and Fast Ethernet port

Industrial 10GBASE-X Fiber over Ethernet Media Converters

IXT-705AT

- Complies with IEEE 802.3ae 10GBASE-R
- NBASE-T featuring adaptive rate operation
- 100 meters over Cat 6A at 10Gbps
- -40~75 degrees C wide operating temperature
- IP30 metal case
- Low power consumption



Industrial 1000BASE-X Fiber over Ethernet Media Converters

IGT-905A

- 1-port 1000BASE-X SFP fiber optic
- 1-port 10/100/1000BASE-T
- 12~48V DC redundant power
- -30 to 75 degrees C operating temperature
- IP30 metal case
- IPv4 Web management
- 802.1Q VLAN
- Storm control and bandwidth control



IGT-900-1T1S/IGT-900-2T2S

- 1-/2-port 10/100/1000BASE-T
- 1-/2-port 100/1G/2.5GBASE-X SFP
- 9~48V DC redundant power design
- -40~75 degrees C operating temperature
- 802.1Q VLAN, MSTP and IGMP snooping
- ERPS Ring and Loop protection supported
- IPv6/IPv4 Web/TLS; Telnet/SSHv2; SNMPv1/v2c/v3 management



IGT-805AT/IGT-815AT

- 1-port 100/1000BASE-X SFP fiber optic
- 1-port 10/100/1000BASE-T
- 12~48V DC redundant power
- -30 to 75 degrees C operating temperature
- IP30 metal case



IGT-1205AT/IGT-2205AT

- 2-port 100/1G/2.5GBASE-X SFP fiber optic
- 1-port 10/100/1000BASE-T
- 2-port 10/100/1000BASE-T(IGT-2205AT)
- 12~48V DC redundant power
- -30 to 75 degrees C operating temperature
- IP30 metal case



Industrial 100BASE-X Fiber over Ethernet Media Converters

IFT-802T

- 1-port 100BASE-FX SC multi-mode, 2km fiber optic
- 1-port 10/100BASE-TX
- 12~48V DC redundant power
- -40 to 75 degrees C wide operating temperature
- IP30 metal case



IFT-802TS15

- 1-port 100BASE-FX SC single mode, 15km fiber optic
- 1-port 10/100BASE-TX
- 12~48V DC redundant power
- -40 to 75 degrees C wide operating temperature
- IP30 metal case



IFT-805AT

- 1-port 100BASE-FX SFP fiber optic
- 1-port 10/100BASE-TX
- 12~48V DC redundant power
- -40 to 75 degrees C wide operating temperature
- IP30 metal case



Industrial Cellular Gateway

ICG-2515-NR

- Global 5G NR (NSA/SA)/4G LTE network with dual SIM design for cellular network redundancy
- 4 10/100/1000T LAN ports and 1 10/100/1000T WAN port
- 2 DI/DO ports and 1 serial port (RS485) for Modbus applications
- Easy management (Setup Wizard, DHCP Server and Dashboard)
- Full security with VLAN, NAT, DMZ, routing, firewall and IP/MAC/port filtering
- -45 to 75 degrees C operating temperature, DIN-rail and fanless design



ICG-2515W-NR

- Global 5G NR (NSA/SA)/4G LTE network with dual SIM design for cellular network redundancy
- 4 10/100/1000T LAN ports and 1 10/100/1000T WAN port
- 802.11ax 1800AX dual band WiFi
- 2 DI/DO ports and 1 serial port (RS485) for Modbus applications
- Full security with VLAN, NAT, DMZ, routing, firewall and IP/MAC/port filtering
- -45 to 75 degrees C operating temperature, DIN-rail and fanless design



ICG-2510W-LTE

- 5-port Gigabit Ethernet, build in redundancy protocol-VRRP
- 2 DI/DO and 1 serial port (RS232 or RS485) for Modbus applications
- Dual module SIM for network load balancing and redundancy
- WiFi compliance IEEE 802.11b/g/n/ac dual-band for mobile client connectivity
- Multiple VPN with IPSEC, OpenVPN, PPTP, L2TP, GRE and VPN Failover
- Full security with VLAN, NAT, DMZ, Static routing, Firewall and IP/MAC/Port filtering
- Supports CMS for remote management
- -35 to 70 degrees C operating temperature and fanless design



ICG-2510WG-LTE

- 5-port Gigabit Ethernet, build in redundancy protocol-VRRP
- 2 DI/DO and 1 serial port (RS232 or RS485) for Modbus applications
- Dual module SIM for network load balancing and redundancy
- WiFi compliance IEEE 802.11b/g/n/ac dual-band for mobile client connectivity
- GPS antenna allows to detect the location via sat nav system
- Multiple VPN with IPSEC, OpenVPN, PPTP, L2TP, GRE and VPN Failover
- Full security with VLAN, NAT, DMZ, Static routing, Firewall and IP/MAC/Port filtering
- Supports CMS for remote management
- -35 to 70 degrees C operating temperature and fanless design



Vehicle 4G LTE Cellular Wireless Gateway

VCG-1500WG-LTE

- 4 10/100TX LAN ports and 1 10/100TX WAN port
- Industrial power with wide DC voltage power supply design
- One SIM slot and one 4G LTE antenna for network connection
- Supports Wi-Fi 802.11 b/g/n for mobile client connectivity
- GPS antenna allows to detect the location via sat nav system
- Supports GRE, PPTP, IPsec and L2TP
- Supports NAT, DMZ, MAC/Application/IP filter and static routing
- Supports DHCP server/client, PPPoE, static IP and DDNS
- -25 to 65 degrees C operating temperature
- Supports CMS and SNMP for remote management



DIN-rail Power Supplies

PWR-40-24/PWR-60-24

- 100~240V AC, 50/60Hz, 1.1A input voltage
- Power output 40 watts/60 watts, 24V, 1.7A, 2.5A
- DIN rail TS-35/7.5 or 15
- -20 ~ 70 degrees C operating temperature



PWR-75-48

- 100~240V AC, 50/60Hz, 1.45A input voltage
- Power output 75 watts, 48V, 1.6A
- DIN rail TS-35/7.5 or 15
- -20 ~ 70 degrees C operating temperature



PWR-240-48

- 100~240V AC, 50/60Hz, 2.5A input voltage
- Power output 240 watts, 48V, 5A
- DIN rail TS-35/7.5 or 15
- -20 ~ 70 degrees C operating temperature



PWR-75-24

- 100~240V AC, 50/60Hz, 2A input voltage
- Power output 75 watts, 24V, 3.2A
- DIN rail TS-35/7.5 or 15
- -10 ~ 60 degrees C operating temperature



PWR-120-48

- 100~240V AC, 50/60Hz, 2.25A input voltage
- Power output 120 watts, 48V, 2.5A
- DIN rail TS-35/7.5 or 15
- -20 ~ 70 degrees C operating temperature



PWR-480-48

- 100~240V AC, 50/60Hz, 4.8A input voltage
- Power output 480 watts, 48V, 10A
- DIN rail TS-35/7.5 or 15
- -20 ~ 70 degrees C operating temperature

